
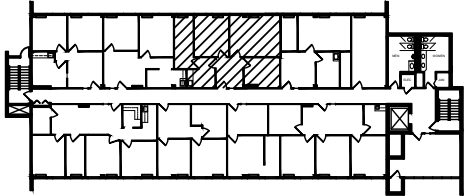
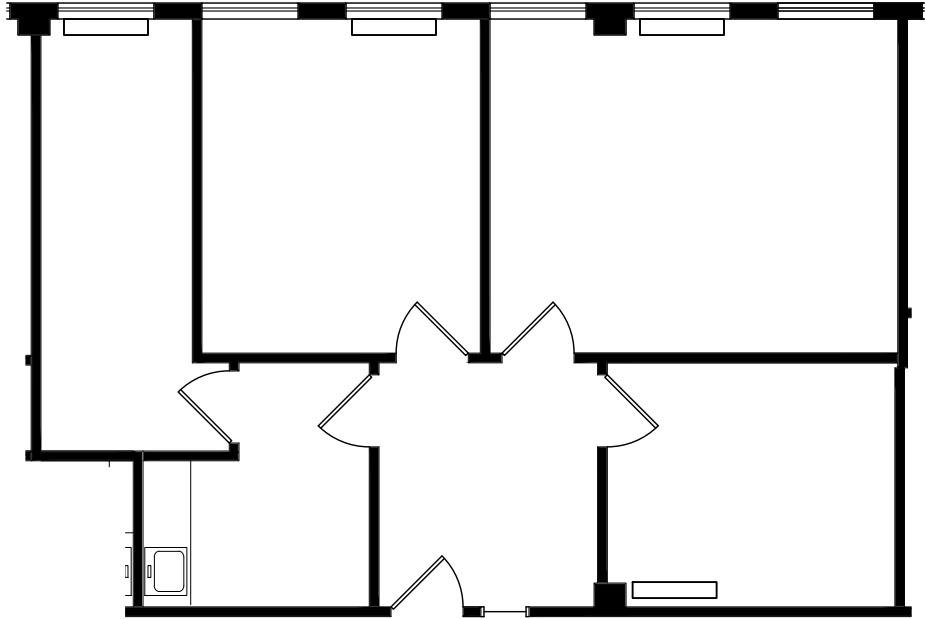


BOULEVARD 25 - 1805 South Bellaire Street

Scale: 1/8" = 1'-0"

Level 5 

October 16, 2018



KEY PLAN

SUITE 545 1,066 RSF
SCALE: 1/8" = 1'-0"



NORTH

boulevard **25**



MATRIX GROUP, INC.

Lauren Quiram, Leasing Agent
lquiram@matrixgroupinc.com
(303) 300-5271